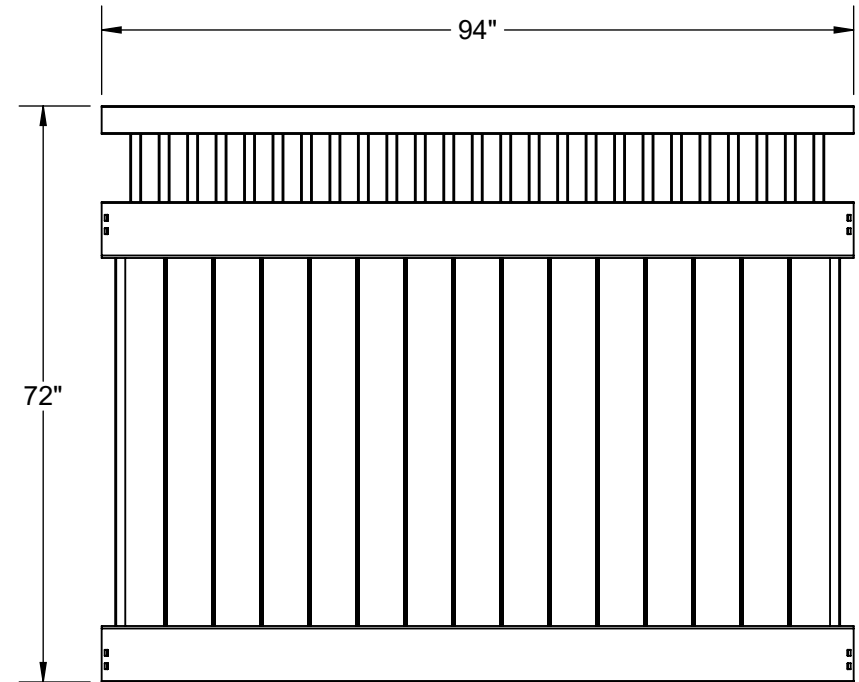
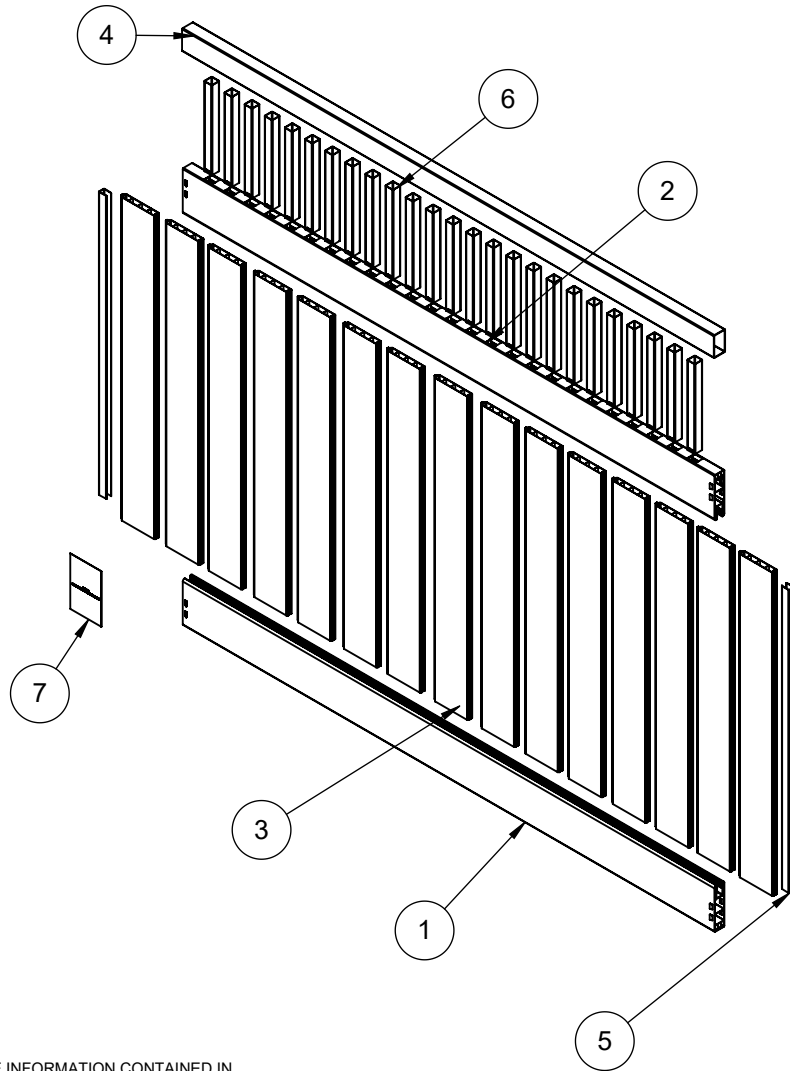


ITEM NO.	DESCRIPTION	QTY
1	1.75X7X94 DECO W/ BARB EXTR	1
2	1.75X7X94 SNGL RTE 1.3X1.3X25	1
3	.875X6X49.5 W/.035W EXTR T&G	15
4	2X3.5X94 SNGL RTE 1.3X1.3X25	1
5	1.02X1.379X46.375 EXTR U-CHANNEL	2
6	1.375x1.375x13.75 EXTR	25
7	GENERIC INSTR CARD VF/VG - PRO/SO 2020	1

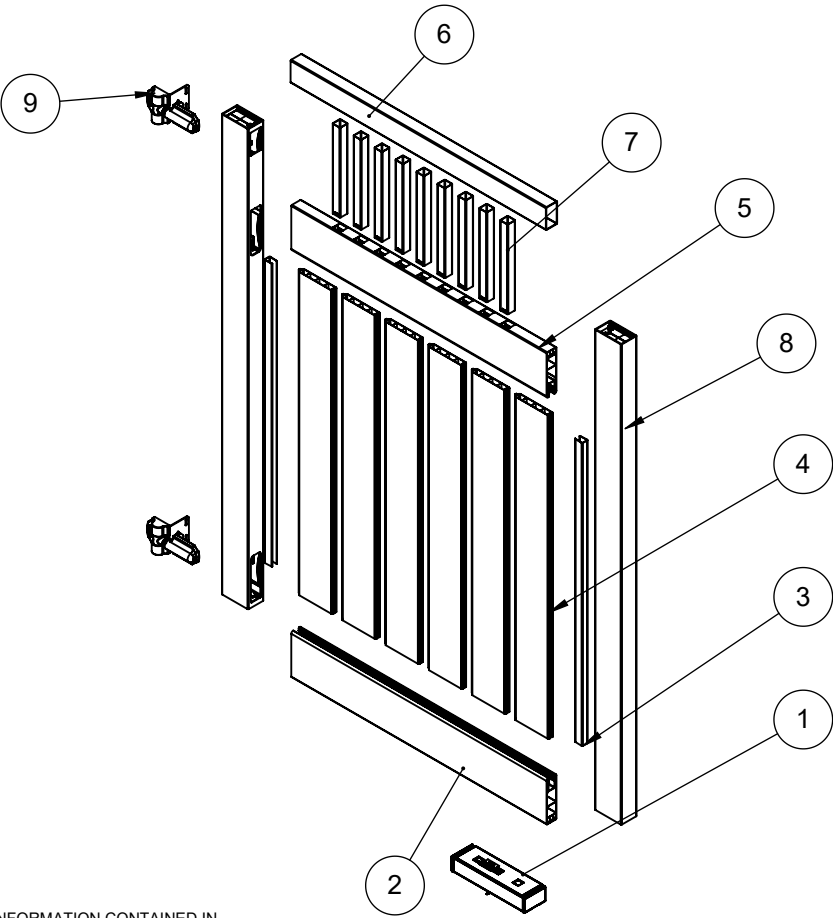


6X8 1.75X7X72 CLSD PKT TOP PNL  
WHT (DL)

THE INFORMATION CONTAINED IN THIS DRAWING IS PROTECTED BY COPYRIGHT AND PATENT LAWS OF THE UNITED STATES AND OTHER COUNTRIES. ANY REPRODUCTION IN PART OR AS A WHOLE WITHOUT WRITTEN PERMISSION IS PROHIBITED.

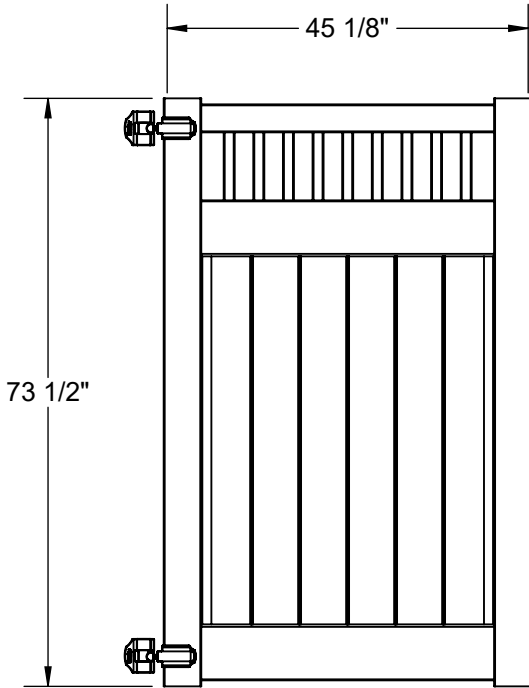
WEIGHT: 49.80

6X46 1.75X7 72H CLSED PKT GATE WH (DL)



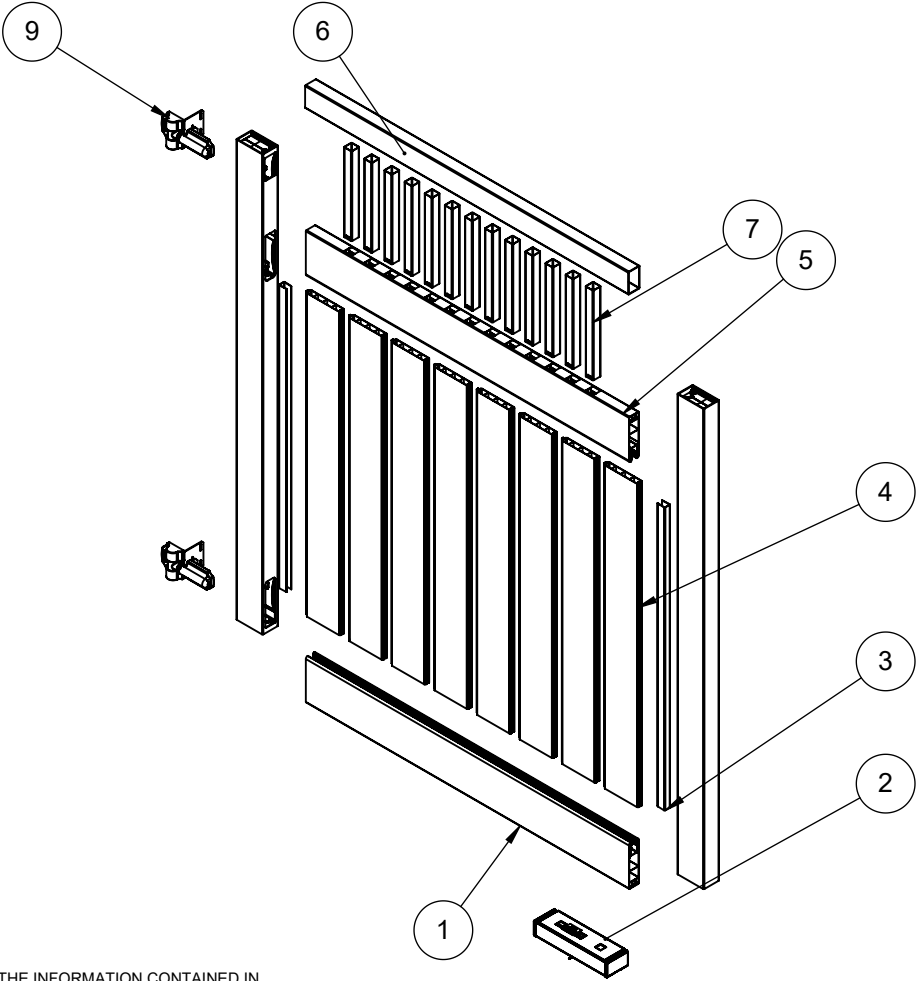
THE INFORMATION CONTAINED IN THIS DRAWING IS PROTECTED BY COPYRIGHT AND PATENT LAWS OF THE UNITED STATES AND OTHER COUNTRIES. ANY REPRODUCTION IN PART OR AS A WHOLE WITHOUT WRITTEN PERMISSION IS PROHIBITED.

ITEM NO.	DESCRIPTION	QTY.
1	2.25X3.875X13.25 PRIV GATE HWBOX-WHITE	1
2	1.75X7X45.125 DECO W/ BARB EXTR	1
3	1.02X1.379X46.375 EXTR U-CHANNEL	2
4	.875X6X49.5 W/.035W EXTR T&G	6
5	1.75X7X45.125 SNGL RTE 1.3X1.3X9	1
6	2X3.5X45.125 SNGL RTE 1.3X1.3X9	1
7	1.375x1.375x13.75 EXTR	9
8	2.75X4.70X73.5 RTE 1.75X7 XCT WH W/UPI	2
9	HEAVY DUTY HINGE PAIR BLACK	1



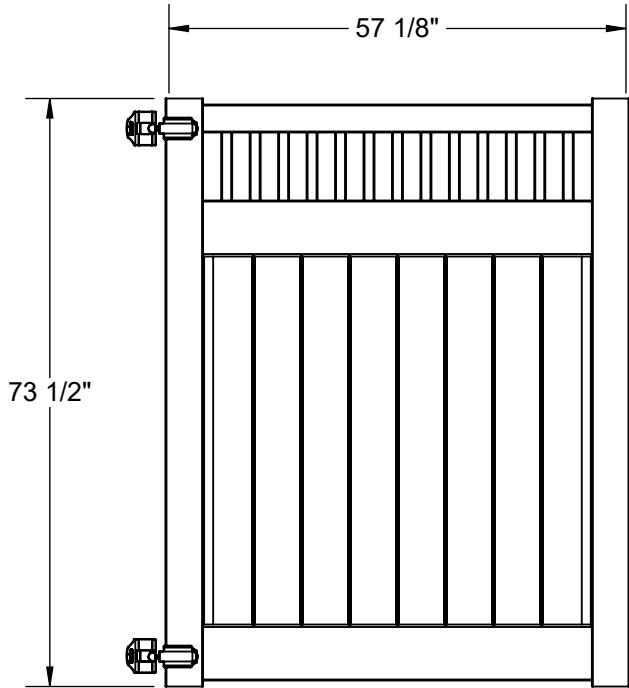
WEIGHT: 45.79

6X58 1.75X7 72H CLSD PKT GATE WH (DL)

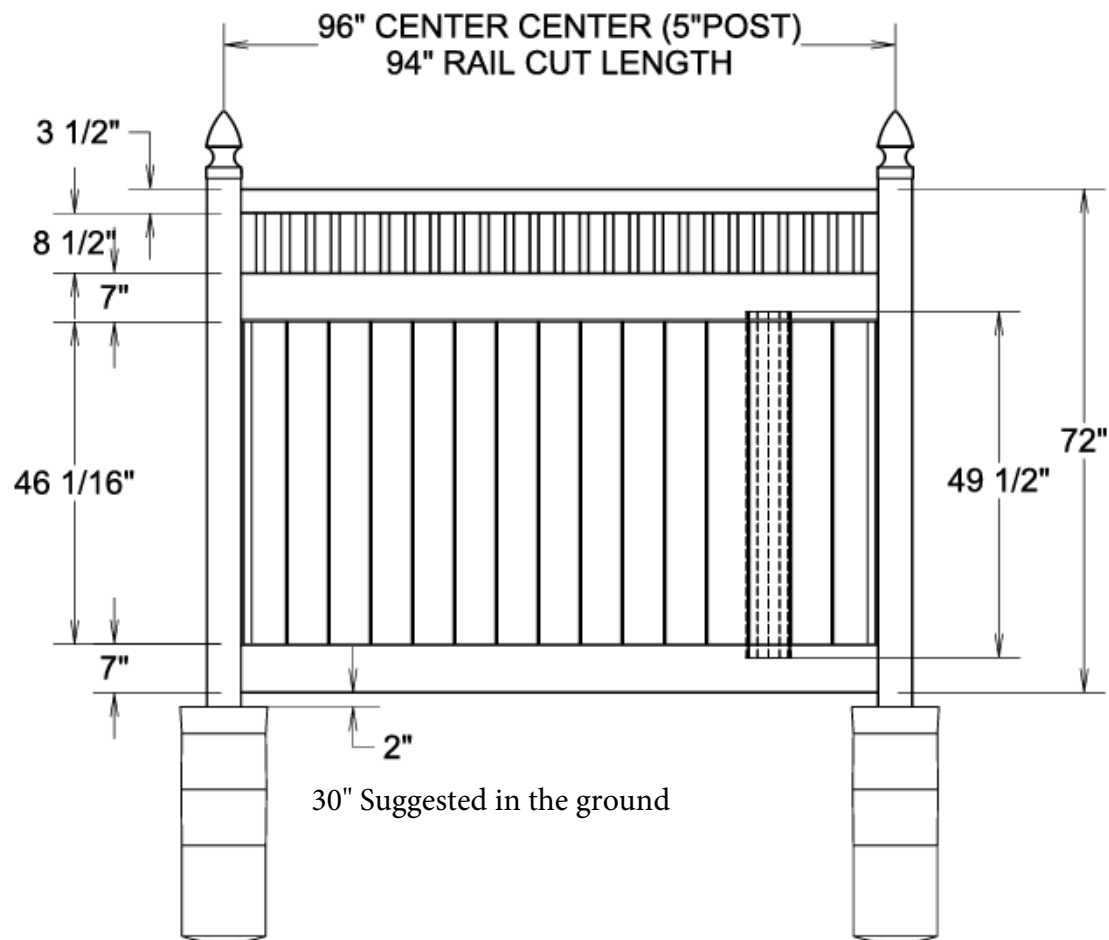


THE INFORMATION CONTAINED IN THIS DRAWING IS PROTECTED BY COPYRIGHT AND PATENT LAWS OF THE UNITED STATES AND OTHER COUNTRIES. ANY REPRODUCTION IN PART OR AS A WHOLE WITHOUT WRITTEN PERMISSION IS PROHIBITED.

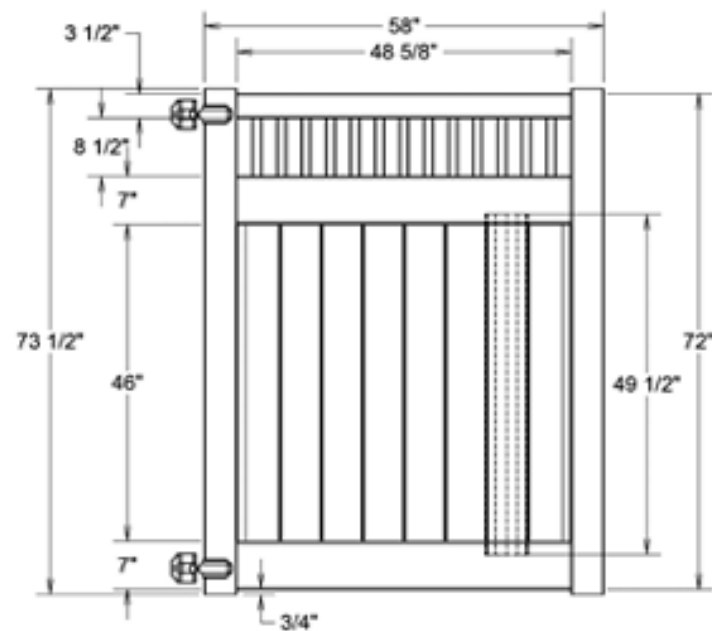
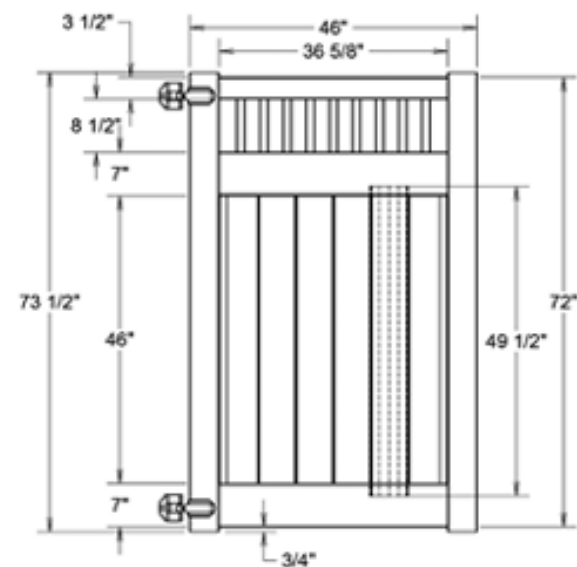
ITEM NO.	DESCRIPTION	QTY.
1	1.75X7X57.125 DECO W/ BARB EXTR	1
2	2.25X3.875X13.25 PRIV GATE HWBOX-WHITE	1
3	1.02X1.379X46.375 EXTR U-CHANNEL	2
4	.875X6X49.5 W/.035W EXTR T&G	8
5	1.75X7X57.125 SNGL RTE 1.3X1.3X13	1
6	2X3.5X57.125 SGL RTE 1.3X1.3X13	1
7	1.375x1.375x13.75 EXTR	13
8	2.75X4.70X73.5 RTE 1.75X7 XCT WH W/UPI	2
9	HEAVY DUTY HINGE PAIR BLACK	1



WEIGHT: 52.28



Bottom & Middle Rails  
1 3/4" x 7" x 94"



Technical drawing of a 4-foot high privacy screen. The drawing shows two vertical posts with decorative finials, connected by two horizontal rails. The screen is composed of vertical slats. Dimensions are provided in inches:

- Overall height: 48" (4'0")
- Overall width: 72"
- Distance between posts: 67"
- Top rail height from base: 17 7/8"
- Bottom rail height from base: 45"
- Distance from base to top of screen: 42 1/16"
- Distance from base to bottom of screen: 5 1/2"
- Distance from base to top of screen (excluding bottom rail): 70"
- Distance from base to top of screen (excluding bottom rail and top rail): 14 1/4"
- Top rail height from top of screen: 3"
- Bottom rail height from bottom of screen: 2"
- Recommended total height: 102" RECOMMENDED

The bottom rail is labeled "WET OR DRY MIX CONCRETE".



The image contains two technical drawings of wooden gates, labeled Model 1 and Model 2. Both drawings show the front and side views of the gates, highlighting their dimensions and construction details.

**Model 1:** This gate has a total width of 46" and a total height of 71 1/2". The top rail is 14 1/4" high from the top edge, and the bottom rail is 5 1/2" high from the bottom edge. The gate is constructed with vertical slats that are 17 7/8" wide. The side rail is 45" high from the bottom edge. The gate is shown with a latch mechanism on the left side.

**Model 2:** This gate has a total width of 58" and a total height of 71 1/2". The top rail is 14 1/4" high from the top edge, and the bottom rail is 5 1/2" high from the bottom edge. The gate is constructed with vertical slats that are 17 7/8" wide. The side rail is 45" high from the bottom edge. The gate is shown with a latch mechanism on the left side.